

JEM PROPERTY

# Orchard House High Street Harwell Didcot OX11 0EX

OIEO £800,000

An 11 bedroom former Neurological Rehabilitation Centre in Harwell.

---

0204 542 1414

[info@jemproperty.co.uk](mailto:info@jemproperty.co.uk)

[www.jemproperty.co.uk](http://www.jemproperty.co.uk)



# Property Description

Orchard House is a former healthcare facility in Oxfordshire. The property includes 11 bedrooms, a meeting room, two kitchens, a therapy room, laundry facilities, an office, a basement with storage, and utility provisions. Outside, there are three parking spaces and a landscaped courtyard.

The property is conveniently located in Harwell with transportation access directly to Didcot, including a bus stop just 0.1 miles away. The property is in close proximity to local amenities.

## THE PROPERTY'S LAYOUT INCLUDES:

- Basement: Includes a staff room, store and plant room.
- Ground floor: 5 bedrooms, a lounge, a store room, a meeting room, 2 kitchens, a therapy room, a laundry room and w/c facilities.
- First floor: A further 6 bedrooms, with w/c facilities and a store room.
- Features: Primary access from the front and side of the building, as well as access to the garden area and parking.





# Key Features



11 Bedroom Former Neurological Rehabilitation Centre



Transport Links: 0.1 miles to the bus stop



GIA 534sqm/5747 sqft



Local Amenities: 0.7 miles



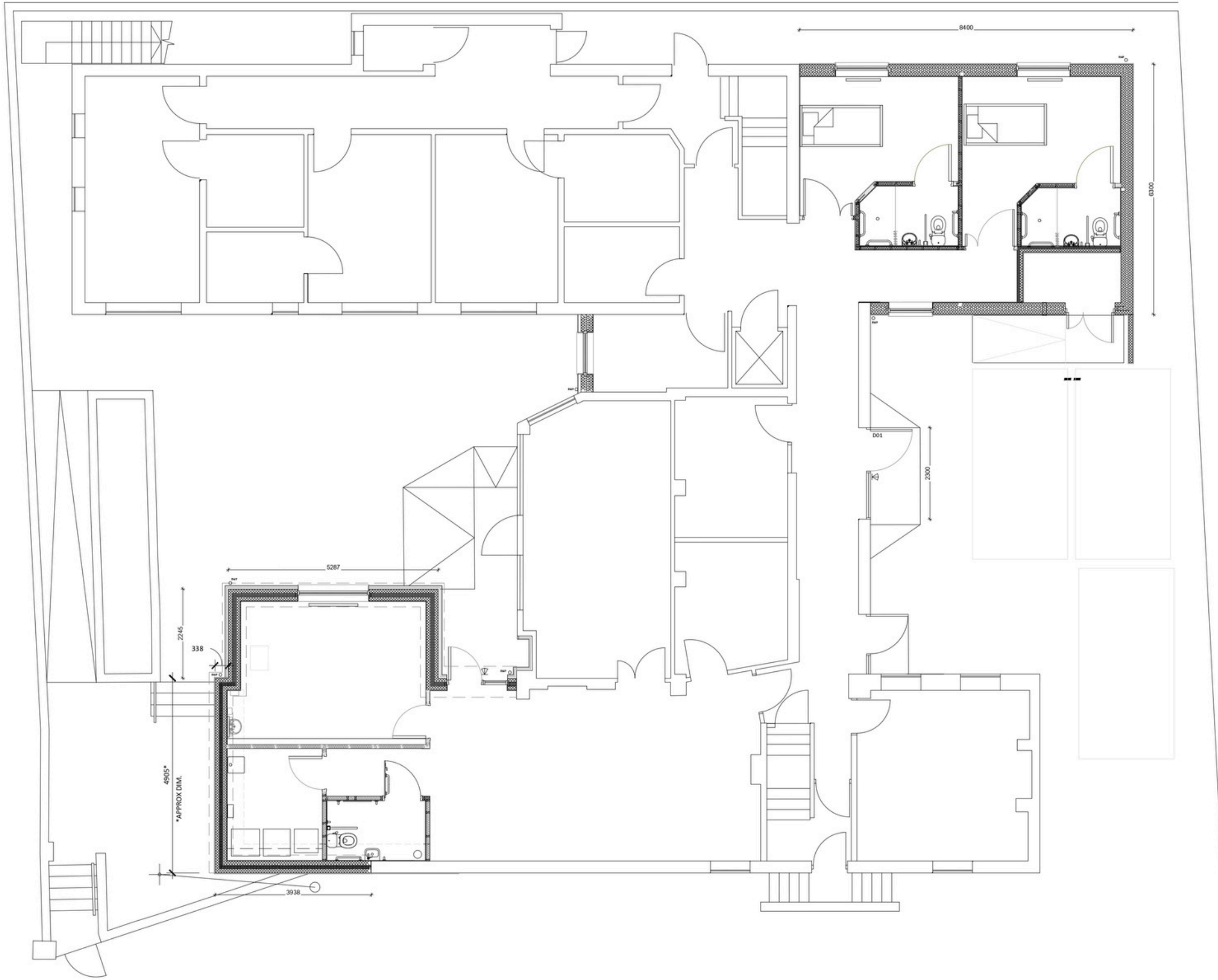
Site Area: 0.17 acres

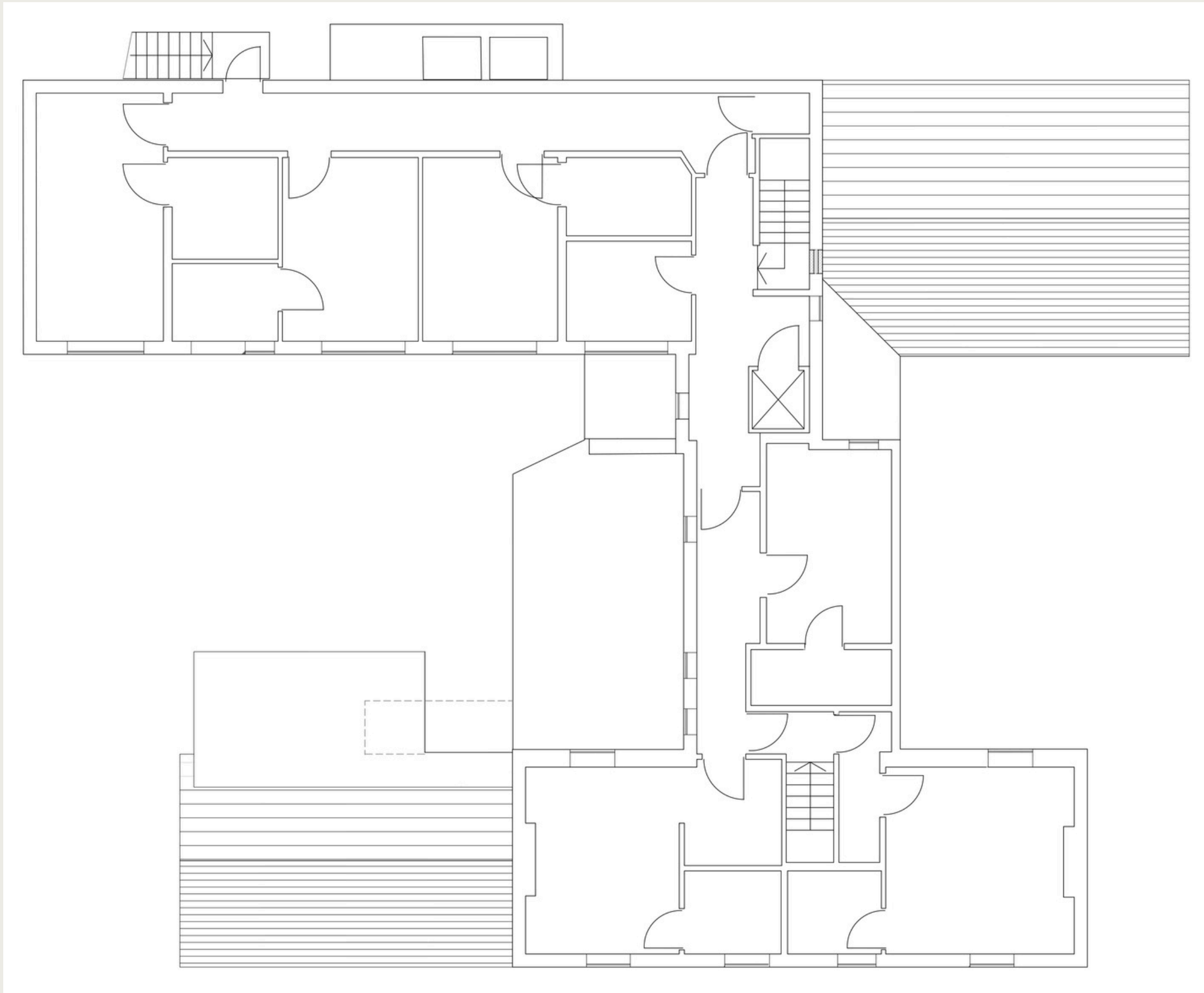


Fantastic Investment opportunity

# Key Information

- OIEO £800,000
- Title ON105970
- Local Authority: Vale of White Horse District Council





JEM PROPERTY

# Partners in *growth*

EMAIL

[info@jemproperty.co.uk](mailto:info@jemproperty.co.uk)

TELEPHONE

0204 542 1414

ADDRESS

Rodney House, Clifton Down Rd,  
Clifton, Bristol, BS8 4AL

WEBSITE

[www.jemproperty.co.uk](http://www.jemproperty.co.uk)

